

St. Joseph

Regional Catholic School



Return to Learning Plan
2021—2022 School Year

www.stjosephbaytown.com

Table of Contents



Introduction 3-4

- Major Learning Points
- Purpose



Returning to School 5

- Face to Face
- Hybrid
- Remote



Health and Safety 6-12

- Campus Access
- Temperature Checks
- Face Covering
- Hand Washing and Sanitizing
- Cleaning and Disinfecting
- Campus Requirements Diagram
- School Entry Flowchart
- Re-admission Criteria
- Emergency Response



School Operations 13-15

- Daily Operations
- Student Well-being
- Scheduling
- Arrival and Dismissal
- Lunchtime
- School Mass
- Prayer Circle
- School Uniform
- Recess
- Before and After Care
- Water Fountains
- Technology
- Field Trips
- Nurse's Office
- Athletics
- Visitors to Campus
- Community Events
- Calendar

Resources



[School Website](#)



[Plan Signature Form](#)



[Questions](#)

This document is subject to change due to the changing environment regarding COVID-19. Addendums will be published with any changes if and when that becomes necessary.



Introduction

We want to thank each and every single person who has been with us during these unprecedented times and we ask for patience during the fluidity of our shared situation. St. Joseph promises to continue to dedicate ourselves to high academic standards as well as quality, personalized care for each and every single one of our students and families.

We have tried our best to listen to guidance from the Center for Disease Control (CDC), the Texas Education Agency (TEA), the Texas Conference of Catholic Bishops Education Department (TCCB ED), the American Academy of Pediatrics (AAP), as well as our Catholic Schools Office (CSO) in order to formulate our plan. Compounded with general recommendations from these agencies, we have also factored in what may be most beneficial for the greater good of the health and safety of our school community - children, parents, at-risk family members at home, and our faculty and staff. While we are all eager to see our students and celebrate our time together, we understand that their safety and health as well as those of our family members are our priority.

We pledge to deliver the best education possible to our students while caring for their socioemotional needs by providing opportunities for one-on-one check-ins as well as time with their classmates. Social events will be encouraged and creativity is paramount during this time.

Thank you so much for all of your patience and understanding. We will continue to monitor our situation and communicate updates quickly.

“Everything has suddenly changed. What we previously took for granted seems to be uncertain: the way we relate with others at work, how we manage our emotions, study, recreation, prayer, even the possibility of attending Mass...”

-Pope Francis, Strong in the Face of Tribulation: A Sure Support in Time of Trial

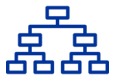
School Leadership

The mission of St. Joseph Regional Catholic School is to REACH the minds, TOUCH the hearts, and SHAPE the souls of its students while teaching them to know, love, and serve God.

Thomas Martir
Principal

Cindy Carlisle
Administrative Assistant

Major Learning Points



Be organized



Keep it simple—Less is more



Communicate clear expectations for teachers, students, and parents



Focus on learning goals



Think about student and staff well-being



Follow guidance from the Catholic Schools Office, state and local authorities

This Return to Learning Plan 2021-2022 is built upon the guidance recommendations of health officials; it is strongly aligned to the reopening guidelines that have been provided by our state and local leaders and the Catholic Schools Office. Our Return to Learning Plan 2021-2022 focuses heavily on the health and physical requirements necessary for returning to our school buildings and in consideration of the academic, social, and emotional effects the COVID-19 pandemic has had on our students and staff. This document is subject to change due to the changing environment regarding COVID-19. Addendums will be published with any changes if and when that becomes necessary.

Purpose

In the face of the COVID-19 global pandemic, St. Joseph Regional Catholic School is committed to dynamic planning and preparation for a safe return to school for the 2021-2022 academic school year.

We are dedicated to providing the safest and most effective methods of learning and instruction while balancing the greatest sense of normalcy for students, faculty, staff, and parents. We aim for clear planning and vision as we continue to provide a Christ-centered, rigorous academic educational experience for students that parents trust and can be relied upon as the superior choice for their child's education now and into the future.

This planning tool is intended to be fluid (a living document) as it is designed to reflect the latest information from the health and governing officials and agencies regarding COVID-19 disease transmission and mitigation strategies. The information is subject to change at any time as new information emerges.

Returning to School

At this time, we are anticipating a face to face return for all students on Wednesday, August 11th (August 2nd for staff). We will reevaluate our current state and local health situation and guidelines to determine our instructional status as more information emerges.

We have planned for multiple settings for teaching and learning to take place, including smooth transitions between options, if needed.

Traditional School Setting—Face to Face: This is the traditional, “brick and mortar” school. As such, there are primary logistics and planning considerations that we have addressed: entrance protocols, social distancing, scheduling, social and emotional support, etc.

Combination School Setting—Hybrid: In the event that we are advised to return to campus, we may need to use a combination of both traditional and non-traditional school settings. We have a plan for a variety of configurations of this approach which may include some students attending school remotely and some in person.

Non-Traditional School Setting—Remote: In the event that the governmental or Archdiocesan authorities may deem it necessary to close our school, teaching and learning will continue to occur within the guidelines of our Continuity of Instruction Plan.



Face to Face

- Entrance Protocols
- Cleaning Protocols
- Social Distancing
- Supporting Catholic Identity
- Scheduling
- High Quality Instruction
- Social and Emotional Support



Hybrid

- Entrance Protocols
- Cleaning Protocols
- Social Distancing
- Supporting Catholic Identity
- Scheduling
- Curriculum Planning
- High Quality Instruction
- Technology Support
- Social and Emotional Support



Remote

- Technology Support
- Curriculum Planning
- High Quality Online Instruction
- Supporting Catholic Identity
- Maintaining Community
- Scheduling
- Social and Emotional Support



Health and Safety

Campus Access



- Access to the St. Joseph campus will be limited to visitors and volunteers essential to school operations and mission vitality.
- Visitors and volunteers on campus will be by appointment or invitation only.
- All visitors will be required to enter through the main entrance and pass the safety screening prior to admittance into the building.
- All visitors on campus will be required to wear a mask and maintain social distancing.

Temperature Checks



- Regularly performing a forehead temperature check of otherwise asymptomatic students in school is not recommended by the [CDC](https://www.cdc.gov), but the practice is also not prohibited by this guidance.
- Parents & caregivers should be strongly encouraged to monitor their families for symptoms.
- Please see the “Arrival & Dismissal ” section under School Operations for more information on procedures regarding daily temperature checks for students.

Face Coverings



- Appropriate face coverings/masks will be used by all students, staff, and visitors while indoors.
- Appropriate face coverings will be used by all students, staff, and visitors while outdoors when individuals are not able to adhere to 3 feet of social distancing.
- Students should use parent supplied face coverings. At this point, we will not be mandating the type, color, or style of face covering. However, face coverings should adhere to the medical purpose of a face covering and should not create conditions for false temperature readings or distractions to the student, classmates, or staff.
- Students will not be expected to wear face coverings when engaging in physical activity or when eating/drinking. However, teachers have discretion to mandate a face covering in certain situations when outside or necessary.
- Students should have a backup mask with them at school.



Health and Safety

Cleaning and Disinfecting



- Commonly-touched surfaces will be sanitized multiple times a day by teachers and staff.
- CDC approved cleaners will be used in all classrooms, restrooms, offices, and other common spaces
- High traffic areas such as offices or other spaces will have their own cleaning protocol.

Hand Sanitizing and Washing



- Hand sanitizer will be placed at building entrances and will be available for students in classrooms.
- In addition to regular handwashing, students, staff, and visitors are encouraged to correctly apply hand sanitizer when entering buildings or classrooms.



St. Joseph Regional Catholic School—Return to Learning Plan



Texas Department of State
Health Services

UPDATED SCHOOL COVID GUIDELINES 12/29/2021

12/29/2021 CDC quarantine recommendations as adopted by the Texas Health Department for **close contacts** will allow for 5 days of quarantine if the individual is **asymptomatic** followed by 5 days of strict mask wearing. If quarantine is not feasible, it can be skipped if they wear a mask in the 10 days after exposure.

Quarantine not feasible" i.e.; exposed student is unable to quarantine at home due to lack supervision for the child, exposed student is unable to quarantine at home because parent must work. If child is unable to strictly wear a mask at school due to developmental age or incorrect mask wearing school should seek the 5-day quarantine + 5 days strict mask wearing and testing. If individuals are fully vaccinated* and boosted*, then they do not have to quarantine.

Here is the link to the CDC guidelines: <https://www.cdc.gov/media/releases/2021/s1227-isolation-quarantine-guidance.html>

EXPOSURES AND CLOSE CONTACTS:

Please refer to this table for a simplified view of the new guidelines if an exposure to COVID-19 occurs:

Not vaccinated:

- 5 days quarantine + 5 days strict mask wearing.
- If a quarantine is not feasible, 10 days of strict mask wearing when around others. (see above i.e. for students)
- Get tested on day 5. (PCR and Rapid Antigen Tests are acceptable. PCR is the gold standard over antigen testing due to its greater accuracy.)

Vaccinated, due for a booster: [Vaccinated 6 months prior, have not received the booster yet]

- 5 days quarantine + 5 days strict mask wearing.
- If a quarantine is not feasible, 10 days of strict mask wearing when around others. (see above i.e. for students)
- Get tested on day 5. (PCR and Rapid Antigen Tests are acceptable. PCR is the gold standard over antigen testing due to its greater accuracy.)

Vaccinated, too early for a booster. [Vaccinated within the past 6 months, not yet eligible for a booster]

- No need to quarantine.
- Wear a mask around others for 10 days.
- Get tested on day 5. (PCR and Rapid Antigen Tests are acceptable. PCR is the gold standard over antigen testing due to its greater accuracy.)

Vaccinated and Boosted [Vaccinated 6 months prior and boosted recently]

- No need to quarantine.
- Wear a mask around others for 10 days.
- Get tested on day 5. (PCR and Rapid Antigen Tests are acceptable. PCR is the gold standard over antigen testing due to its greater accuracy.)



St. Joseph Regional Catholic School—Return to Learning Plan

COVID POSITIVE

Please note, these changes in recommendation are only for close contacts. **Our isolation guidelines (i.e any confirmed positive or suspected positive cases) remain the same.**

*****HCPH recommends a full 10 days of isolation after a positive PCR/Antigen test.**

COVID positive [Regardless of vaccination status]

- Stay home for 5 days.
- If you have no symptoms or your symptoms are resolving after 5 days you can leave your house. If you have a fever, you must be fever free for 24 hours without fever reducing medication.
- Wear a mask for additional 5 days to complete 10 total days.



ON-CAMPUS REQUIREMENTS FOR...



LAB-CONFIRMED COVID INDIVIDUAL

ALL CRITERIA MUST BE MET:

1. Fever-free for 24 hours without fever reducing medication **AND**;
2. No symptoms or symptoms are resolving **AND**;
3. At least 5 days have passed since symptoms first appeared.
4. Wear a mask when around others for 5 additional days to complete 10 total days.

COVID SYMPTOMS



If the individual has COVID symptoms and wants to return to school before completing the 5-day period, the individual must either:

- (a) Obtain a documented negative PCR or Rapid Antigen test and are symptom free (negative home tests are not accepted)
- OR-**
- (b) No testing and quarantine for 5 days and return on the 6th day symptom free, Fever-free for 24 hours without fever reducing medication, and 5 additional days of strict mask wearing when around others.

"CLOSE CONTACT" WITH SOMEONE WHO IS LAB-CONFIRMED COVID POSITIVE



1. Catholic schools should screen individuals after the quarantine period has concluded. If the individual experienced COVID symptoms during the quarantine period, they should provide the school documentation from a COVID PCR or Rapid antigen test. If the individual did not experience COVID symptoms during that period, the individual may be allowed back on campus on the 6th day.

"CLOSE CONTACT" is defined as:

Being within 6 feet of an infected individual for a cumulative total of 15 minutes or more over a 24-hour period.

Exception: In the K-12 indoor classroom setting, the close contact definition **excludes** students who were 3 ft. or more from an infected student(s), if both infected student and the exposed student(s) correctly and consistently wore masks the entire time.

****This exception does not apply to teachers, staff, or other adults in the indoor classroom setting.**

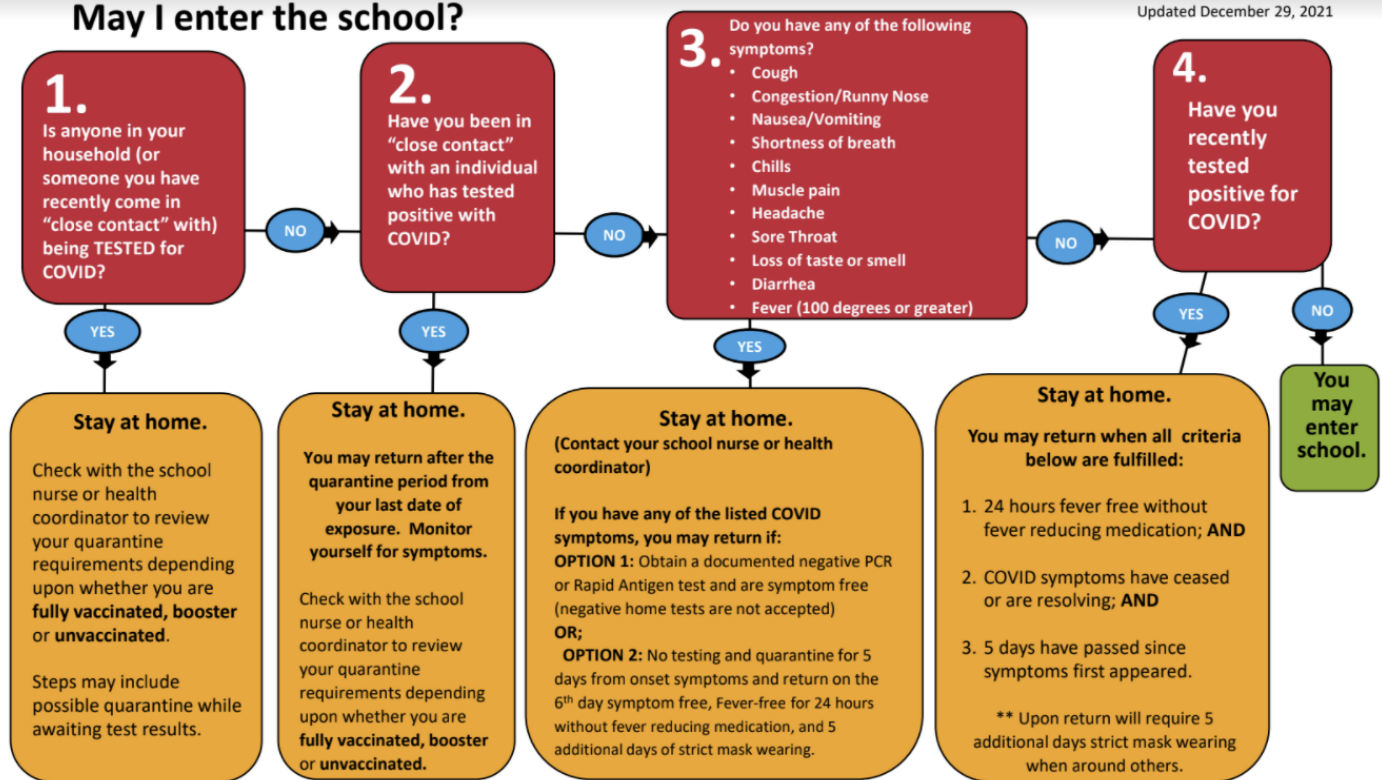
An infected person can spread COVID starting from 2 days before they have any symptoms. If an infected person is asymptomatic COVID can spread 2 days before the positive specimen collection date.



St. Joseph Regional Catholic School—Return to Learning Plan

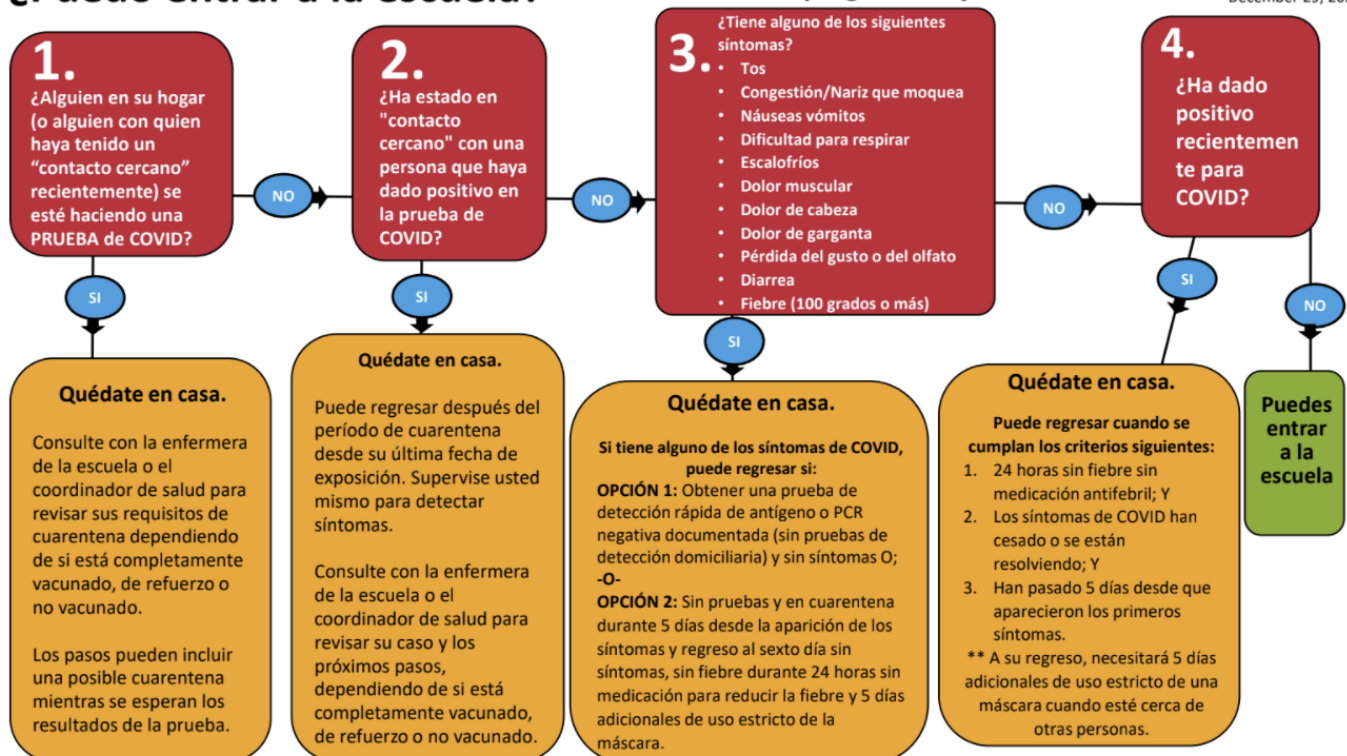
May I enter the school?

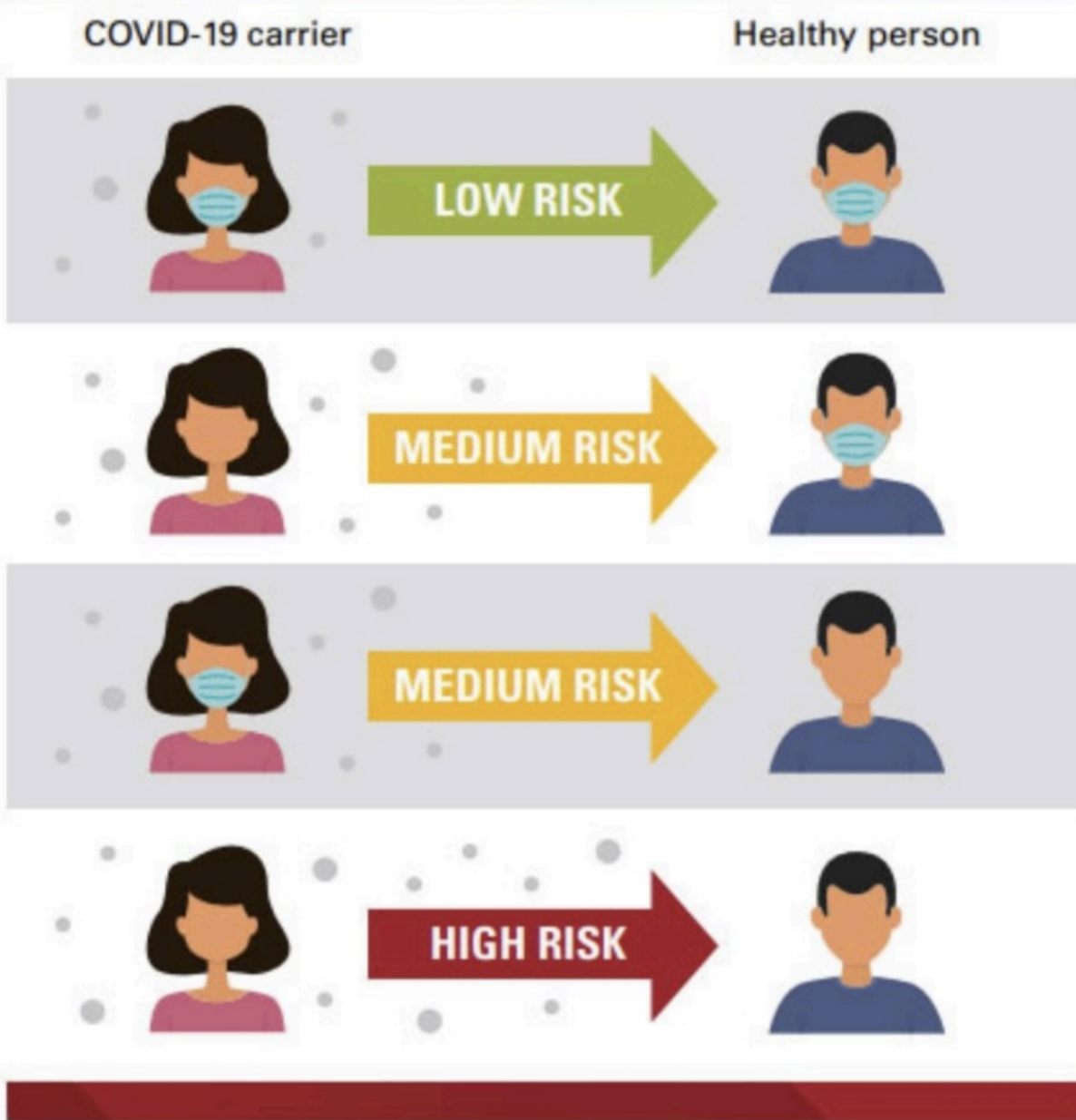
Updated December 29, 2021



¿Puedo entrar a la escuela? Comience con las 4 preguntas rojas a continuación ...

Updated December 29, 2021





Health and Safety: Emergency Response for COVID-19

If St. Joseph Regional Catholic School identifies that a confirmed case of COVID-19 has entered a school building, the following procedures will be observed:

Notification and Coordination



- Notify and coordinate with the local health department—the local health department will be abreast of the latest required action steps and guidance for appropriate response to COVID-19.
- Coordinate with the local health department for active disease surveillance.
- Notify the Catholic Schools Office.

Communications



- Communicate with staff, parents, and students.
- Communication must maintain confidentiality of the student or staff member as required by ADA and FERPA.

Dismissal and Transition to Remote Learning



- Be prepared for dismissal of students and staff for a 2-5 day minimum. The local health department will likely advise an initial short-term dismissal to allow time for tracing and required cleaning.
- Partial school closures are possible if affected areas are limited and can be closed off. Longer term dismissals may be advised. Partial or full close would apply to the Before and After School Program. Extra-curricular activities and events should be canceled as well in the event of required school dismissals.
- Transition to Remote—Distance Learning.

Safe Return to School—Cleaning and Sanitation



- Schools should wait as long as practical before beginning cleaning and disinfection to minimize potential for exposure to respiratory droplets. If possible, open outside doors and windows for a period of time and wait up to 24 hours before beginning cleaning and disinfecting. Specific CDC instructions can be found here: [CDC—Interim Guidance for Administrators](#).
- Coordinate with the local health department for a safe return to school operations.



School Operations

Daily Operations



- We will operate with face-to-face instruction.
- We will operate under current state guidelines regarding classroom occupancy and social distancing in our classrooms, leveraging additional campus spaces if necessary.
- In each classroom, students will wear face coverings and social distancing guidelines will be in place.
- Students will not share supplies or materials and, when possible, will sit at an individual desk.
- Student movement around the campus and classroom may be limited.

Bringing Students Back to Campus: Student Well-Being



- We anticipate our students will experience some measure of apprehension or anxiety as we return to school in the fall. We are committed to creating an environment that will address the needs of students' physical, emotional, and mental safety needs during this unprecedented time.
- We encourage you to make time to discuss returning to school with your children and to learn and explore their specific apprehensions. Thinking through and discussing their uneasiness, such as going to the restroom or eating lunch, will give your family an opportunity to address these concerns before they occur. Practice using masks at home in their naturally safe environment as you discuss returning to school to eliminate any worries regarding mask wearing.
- We will monitor and respond to signs of stress in your children and prioritize self-care, empathy, and patience with yours and your child's circumstances.
- We encourage you to notify teachers and staff with any personal apprehensions, anxieties, or issues related to your children, as we want to work in partnership with you to create an environment that is both supportive of their needs and conducive to learning.

Scheduling



- Students PK-3rd are to remain with their homeroom teacher as much as possible.
- Ancillary teachers and staff may come and relieve the homeroom teachers at designated points to teach.
- 4th-5th students will rotate through their teachers and classrooms with sanitizing and hygiene practices in place.



School Operations

Arrival and Dismissal

- Morning arrival for PK-2nd Grade will take place at the Primary Building to mitigate the gathering of students.
- Morning arrival for 3rd-8th Grade will take place at the Main Building.
- Students must remain in their cars until a temperature check is completed.
- Students with a temperature below 100.0° F will be permitted enter the building.
- Students with a temperature above 100.0° F will proceed to a secondary temperature check. If the secondary temperature check confirms a temperature of 100.0° F or greater, the student will be sent home.
- Please be prepared for an amended set of carpool procedures in the event that these new procedures should substantially affect traffic congestion or student punctuality.
- Dismissal will be entirely by carpool. Early pickups for students should be phoned ahead.



Lunchtime

- Students may bring a lunch or have a lunch obtained through the lunch program.
- School lunches will be individually boxed or packaged and delivered to the classrooms.
- At this time, parents or other visitors are not allowed on campus for lunch.
- At this time, parents are allowed to send store-bought, individually packaged treats for birthday celebrations. We understand the inconvenience, however for the safety of all of our students we as that you respect these considerations.
- Students may eat in the cafeteria/gym as well as classrooms; sanitizing to follow lunchtime.



School Mass

- School mass will still continue every Friday morning.
- We anticipate that only two grade levels at a time will attend mass in the church. All other grade levels will have mass streamed to the classrooms.
- Grade levels will attend mass on a rotating schedule.
- Mass uniforms will still be required for all students every Friday.



Prayer Circle



- Morning prayer, announcements and other morning traditions will take place over the inter-com system to continue practices and establish community

School Operations

School Uniforms



- St. Joseph Regional Catholic School students will continue to wear uniforms for face-to-face instruction.
- PE uniforms will be required for 4th-8th. Air purifiers and limited numbers in locker rooms will take place to provide an extra layer of safety for the students.
- Students may bring tennis shoes to school for their PE days to change into only at the beginning of their PE class.

Recess



- Recess will take place outside, and when possible, students may be allowed to remove their masks for play.
- In the event that social distancing may not be possible, masks may be required.

Before and After Care



- Before and After Care will operate under the traditional schedule (6:30a-7a; 3:30p-6p)
- The same guidelines observed during the school day will apply for these programs.
- Social distance and masks will be required when necessary.

Water Fountains



- Shared water fountains will be unused.
- At this time, the contactless water bottle filling station will be available for refilling of water bottles only.
- Reusable water bottles are encouraged to be used by individual students only.

Technology



- Faculty and staff will monitor any shared technology, ensuring that all materials are cleaned and sanitized after each use.
- Any families that are in need of technology or devices at home in the event of remote learning should contact the school for assistance.

Field Trips



- Field trips are anticipated for this coming year, depending on local guidance.



School Operations

Nurse's Office



- Minor scrapes and bumps or general first-aid will temporarily be handled outside of the nurse's office area; per normal procedures, the incident will be recorded and an assessment will be made as to whether the injury requires greater intervention or parent contact.
- Classrooms, cafeteria, and gym will be outfitted with minor first aid supplies, ice packs, and incident form surveys.
- Visits to the office will be reserved for students experiencing fever, flu-like symptoms, or more severe injuries.
- Students presenting COVID-19 symptoms will be separated in a triage area until parents can pick them up.

Athletics



- We will follow state (TEA, TCCB ED) and local (CSO, GHCAA) guidelines for our athletics.
- At this time, sports are to resume if they are able to provide appropriate hygiene and social distancing protocol.
- In the even that any sports programs are not permitted, we will advocate for a postponement of the season as opposed to an all-out cancellation.

Visitors on Campus



- Access to the St. Joseph Regional Catholic School Campus will be limited to visitors and volunteers essential to school operations and mission viability.
- Visitors and volunteers on campus will be by appointment or invitation only.
- All visitors will be required to enter through the main entrance and pass the safety screening prior to entry.
- All visitors on campus will be required to wear a mask and maintain social distancing.

Community Events and Large Group Gatherings



- In consideration of social distancing guidelines, some of our community events will need to be suspending or postponed. We will send communication on any changes.

Calendar



- We will make any adjustments to the school calendar to reflect any postponements or re-scheduled events and publish them on the school website as well as communicate the update to the school community.



Resources



Questions

Please click on the question icon to the left or from anywhere in the document (the bottom of each page) to submit your questions.



Signature Form

All families are required to have one parent/guardian complete a quick Google Form to acknowledge the receipt of the St. Joseph Regional Catholic School Return to Learning Plan. Click the icon to the left to take you to the form.



School Website

More information about St. Joseph Regional Catholic School and any updates will be posted as quickly as possible, including an updated calendar and any new procedures or information.



Social Media

Stay connected to St. Joseph on [Facebook](#), [Instagram](#) (@stjosephbaytown), and [Twitter](#) (@stjosephbaytown).